

BITTERNE MANOR PRIMARY SCHOOL

YEAR 4

RESIDENTIAL

We are excited to announce that this year's Year 4 Residential Trip will take place at the wonderful Fairthorne Manor, one of the UK's leading outdoor adventure centres. This one-night stay is the perfect opportunity for children to build confidence, develop independence, and enjoy an unforgettable adventure with their friends!

**JUN
18**

**JUN
19**

**FAIRTHORNE
MANOR**

WHY FAIRTHORNE?

Fairthorne Manor offers a safe, vibrant and inspiring environment where children can step out of their comfort zones and discover what they're capable of. With experienced staff and a huge range of activities, it's the ideal setting for young adventurers!



TRIP OVERVIEW



Dates: June 18th-June 19th



Location: Fairthorne Manor



Nights Away: 1



Travel: Minibus from school



Staff: Accompanied by school staff and trained activity

WHAT'S INCLUDED?

- Comfortable overnight accommodation
- Nutritious meals (dinner, breakfast & lunch)
- Fully supervised adventure activities
- Evening entertainment
- All safety equipment

WHY GO?

- Builds confidence and independence
- Encourages teamwork and resilience
- Strengthens friendships
- Creates lasting, joyful memories
- Offers hands-on outdoor learning experiences

ITINERARY

- Leave around 9:30am on Thursday
- 11am arrival - site tour and unpack bags
- 12:45 Lunch
- 1:45-3:15 Adventure Activity
- 3:30-5:00 Adventure Activity
- 5:30-6:30 Dinner
- Evening Activity
- 8:00 Breakfast
- 9:30-11:00 Adventure Activity
- Return to school mid afternoon

Activities are yet to be confirmed, but could include:

- Blind trail
- Obstacle course
- Archery
- Campfire Skills/Den Building
- Kayaking
- Paddle boarding
- Climbing / abseiling

WHERE DO WE STAY?

- Heald House
- A comfortable 88 bed, 3 storey block
- accommodating guests in bunk bedded rooms.
- Rooms are located around a central meeting area on each floor

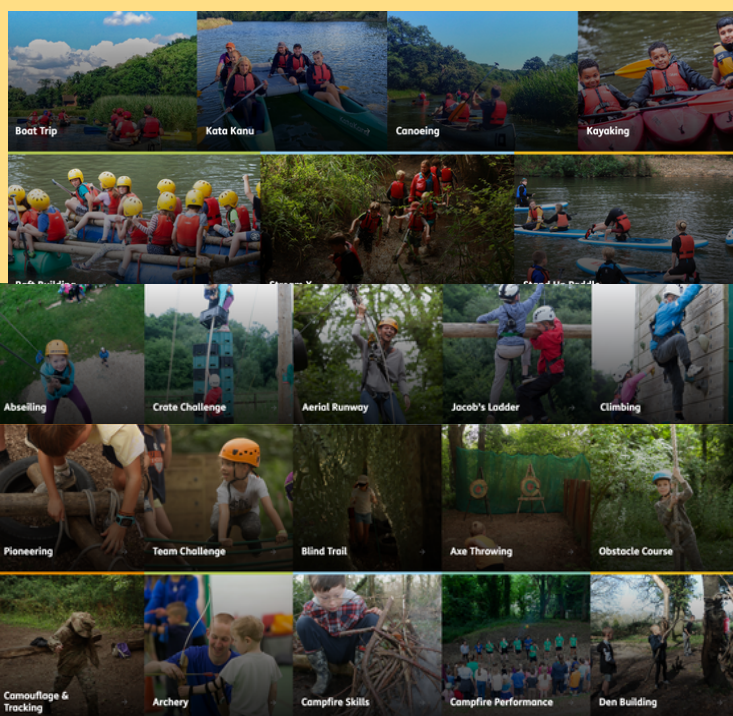


WHAT DO I NEED?



A full kit list will be provided, but typically includes:

- Outdoor clothing and sturdy footwear
- Waterproof jacket
- Toiletries
- Refillable water bottle
- Big smiles and a sense of adventure!

POSSIBLE ACTIVITIES



COST INFORMATION & BOOKING

-  Cost Information
- Total Cost: £135
- This includes all travel, accommodation, food and activities.
- Payment plans are available - please speak to the school office if needed.
-  How to Book
- Letters will come home next week with a consent form to return
- Spaces are limited, so please reply promptly to secure a place.

YEAR 4 LAST YEAR WENT FOR THE DAY. HERE'S WHAT THEY THOUGHT

I really enjoyed the obstacle course and the hard work we had to put into it. I also enjoyed paddle boarding - it was so fun!

Who wouldn't go to Fairthorne?
It was a fantastic experience!

I enjoyed the rock climbing and archery. The activities took a lot of team work and you had to be really good at aiming. Have fun!!
It was an amazing experience to go here! So fun and exciting - how high we went and how wet we got!

